

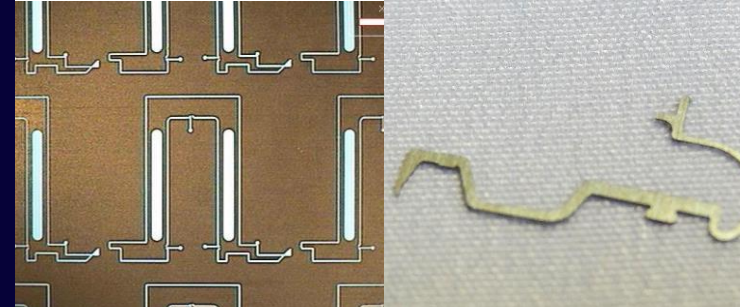
PRODUCT

Contactors

ISMECA designs, manufactures, and sells turret-based test handling and back-end finishing solutions for ICs, LEDs and discrete components.

LMJ used for:

- Prototyping on CuBe
- Cutting and drilling - damage free processes on CuBe



CHALLENGE

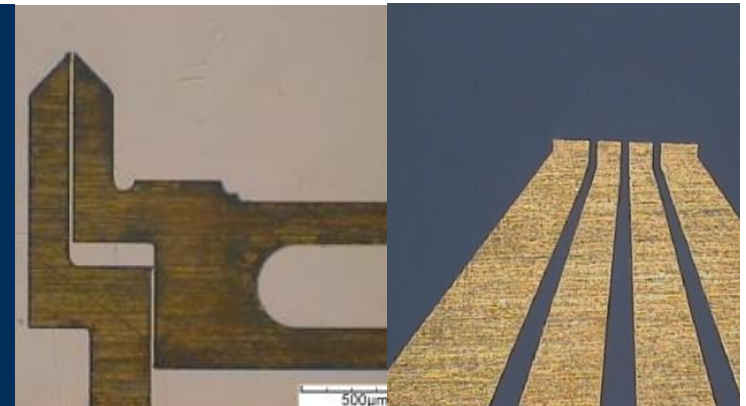
Flexible & stable tool for damage-free processes

Main processing criteria:

- No heat affected zone (HAZ)
- No burrs
- Safe processing (low toxicology): CuBe processing
- Sharp angles
- Perfect verticality
- Narrow tolerances & small radius
- Flexibility for 1-10k pcs

Machining technologies able to reach these criteria:

- Stamping (partially)
- Laser MicroJet (LMJ) - water jet guided laser technology



SOLUTION

Best flexibility, smaller dimensions, no burrs

LMJ advantages vs Stamping:

- Covers all requisites: damage-free, vertical, and precise processing
- Higher flexibility for lower production volumes (1-10k pcs)
- No deburring phase

Installed machine type:

- 1 x LCS 300 - extended
- 100 W green laser



LCS 300

