

CASE STUDY



Suron Precision Technology, Israel

Jobcase-01 Date: 12.11.2020



SYNOVA S.A.
Route de Genolier 13
1266 Duillier
Switzerland
www.synova.ch

PRODUCT

High precision metal parts job shop

Suron is a professional precision metal parts contractor, founded in 1976. It applies photo-chemical etching, laser cutting, electro-forming and milling. Served industries are defense, aerospace, medical, electro-optics, and micro-electronics.

LMJ used for:

- Cutting high precision metal parts



CHALLENGE

A complementary solution to etching and electro-forming

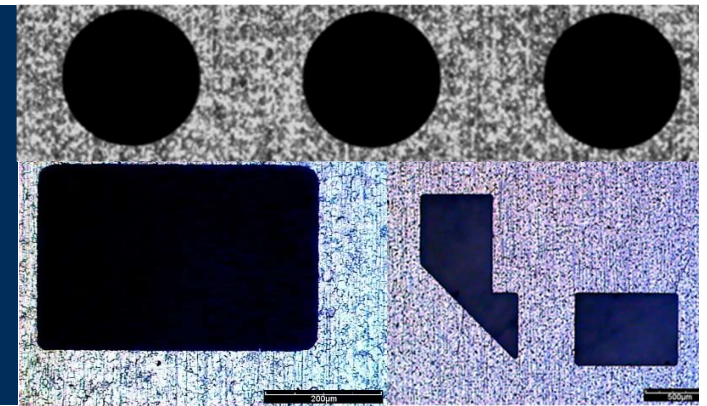
Maintaining the quality of etching and electro-forming, but allowing higher throughput and flexibility

Main processing criteria:

- High speed and flexibility
- No HAZ
- No deformation
- No burrs
- Perfect verticality
- Narrow tolerances
- Low roughness

Machining technologies able to reach these criteria:

- Etching, Electro-forming, Milling
- Laser MicroJet (LMJ) - water jet guided laser



SOLUTION

No HAZ, high quality and flexibility

LMJ advantages versus Etching/Electroforming:

- Much faster (from drawing to part)
- No need of masks or tools
- Large range of materials
- High stability

Installed machine type:

- 2 x LCS 800
- 70W IR laser



LCS 800

