

PRODUCT

Shaver caps

Micro-machining of highly demanding parts:
Development of shaver caps (60-450µm thick SS)

LMJ used for:

- Prototyping
- Cutting and drilling - damage free processes



CHALLENGE

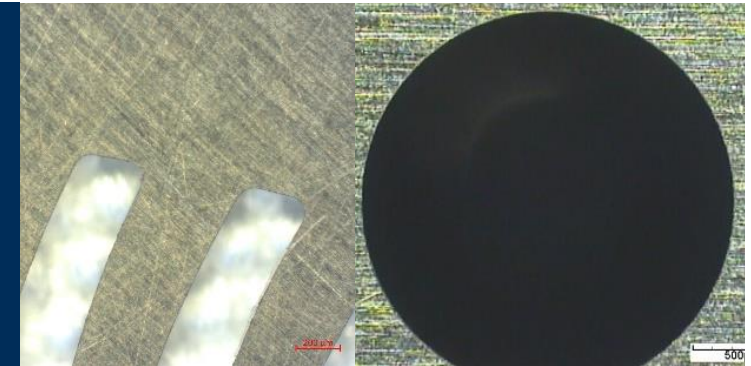
Flexible & stable tool for perfect/heat damage-free processes

Main processing criteria:

- No heat affected zone (HAZ)
- Sharp angles without rounding
- Perfect verticality
- Narrow tolerances & small radius
- Very low stress machining
- Cutting with a potential angle of up to 30deg

Machining technologies able to reach these criteria:

- Wire EDM (partially)
- Dry laser (partially)
- Chemical etching (partially)
- Laser MicroJet (LMJ) - water jet guided laser technology



SOLUTION

Best flexibility, able to reach expected top quality/tolerances, covers capacity of 3 other machines

LMJ advantages vs wire EDM/dry laser/CE:

- Covers all requisites: damage-free, vertical, and precise processing
- Flexibility
- Very short warm-up and set-up times

Installed machine type:

- 1 x LCS 300 – Hybrid 5 axes
- 100 W green laser

